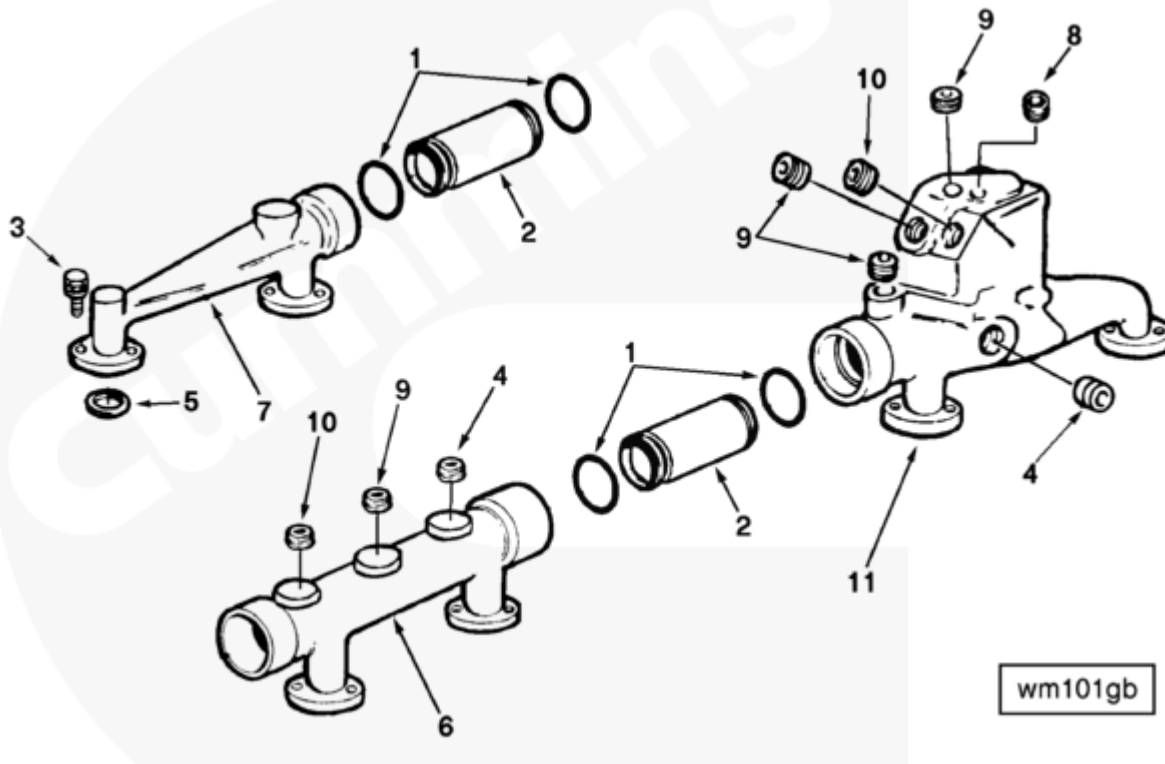




Parts Catalog - Option Detail

Electronic Parts Catalog - Option Detail				
Option	Group	Graphic	Film Card	Date
WM1033	08.06	wm101gb	F	15-AUG-92
Engines	NH/NT 855, NT495, NT743, NTA855 N106			

©Cummins Inc



[SMALL](#) | [MEDIUM](#) | [LARGE](#)

Cart	Ref No	Part Number	Part Description	Required	Remarks
<input type="button" value="View My Cart"/>					
		WM1033	Water Manifold		
					Water Manifold
					Three section water manifold
					with no tap provisions in
					rear section. Center section
					has one 3/8 in. hole, one
					1/2 in. hole and one 3/4 in.

					hole. Front section when
					mounted with MP5157 has one
					1/8 in. hole, one 3/8 in.
					hole, two 1/2 in. holes and
					one 3/4 in. hole.
<input type="checkbox"/>	1	70624	O-Ring Seal	4	
<input type="checkbox"/>	2	130394	Water Bypass Connection	2	
<input type="checkbox"/>	3	3010596	Captive Washer Cap Screw	12	3/8 - 16 x 1 1/4 in.
<input type="checkbox"/>	4	3013786	Pipe Plug	2	3/8 NPT.
<input type="checkbox"/>	5	3024709	Rectangular Ring Seal	6	
<input type="checkbox"/>	6	139433	Water Manifold	1	Center.
<input type="checkbox"/>	7	3013000	Water Manifold	1	Rear.
<input type="checkbox"/>	8	3025458	Pipe Plug	1	1/8 NPT.
<input type="checkbox"/>	9	3008468	Pipe Plug	4	1/2 NPT.
<input type="checkbox"/>	10	3008469	Pipe Plug	2	3/4 NPT
<input type="checkbox"/>	11	3015114	Water Manifold	1	Front.